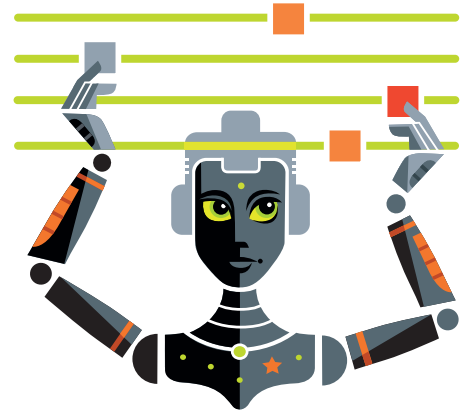


Stella Configuration

Ensures your networks are configured to your exact standards reducing reliance on human labour and oversight, eliminating error, lowering your risk profile to drive network compliance.



Stella Configuration Deliverables

Creation of

- Full network configuration using your network standard
- Exception reporting for accepted non-compliant configuration parameters
- Role based hierarchical Approval process
- Pass/fail report confirming the configuration has been applied
- Configuration documentation for UAT acceptance
- Governance Audit log and change-set reporting

Benefits

- **Hardware agnostic standards based design**
 - OEM specific skill sets not required
- **Full Data Integrity**
 - All data belongs to a single Instance owner
 - Instance owner can grant data access via SSO to Service Providers
 - Stella Data is encrypted in transit and at rest
 - No data is stored on the Stella Relay
 - Data is never shared between instances
- **Significant Labour Savings**
 - 98% reduction in labour
 - 100% accuracy !

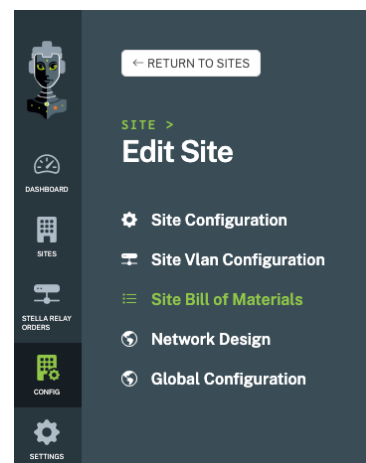
Stella Requirements

Requirements to run Discovery/Compliance/Configuration* and Monitoring modules and leverage Stella Central

- Stella Instance with an enterprise licence
- Provision target networks
- *Order Stella Relay per target network
- *Install Stella Relay on the target network

* not required for Configuration

Stella Configuration Interface



Stella credentials

- SOC II
- CyberCX
 - 6 monthly attestation for Stella Relay and Portal
- SNMP v3 encryption activated for ServiceNow

Patents:

- U.S. Patent Application No. 18/134,877
- Australian Provisional Patent Application No. 2022901013
- European Patent Application No. 23168068.