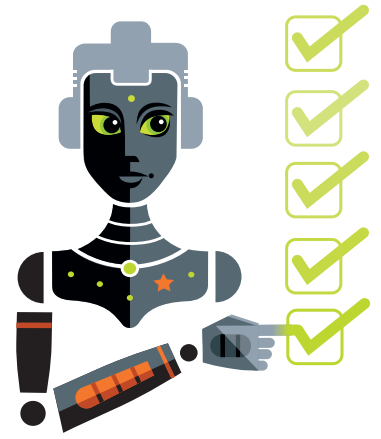


# Stella Compliance

Automates continuous independent network risk identification of your critical network vendors, and their configurations, measured against your standards, creating suggested remediation priorities to enhance security programs with daily monitoring alerts of weighted risk rankings.



## Stella Compliance Deliverables

### Reporting of:

- Compliance score against your network standard
- Weighted Risk score per hotel network

### By

- Network
- Ownership type
- Region
- Network Manager
- RDIT/ITM

### Creation of suggested actions to remediate Compliance failures

### Report Documents:

- Proactive identification of upgrade priorities
- Network configurations
- port mapping
- VLANs configured on the available interfaces
- SSIDs as reported by the Wireless Controller (including hidden)
- Port utilisation
- Available AP licences
- AP to room ratio
- Waivers approved for specific network

## Benefits

- **Deployed in under 20 minutes**
  - No IT skills required
- **Full Data Integrity**
  - All data belongs to a single Instance owner
  - Instance owner can grant data access via SSO to Service Providers
  - Stella Data is encrypted in transit and at rest
  - No data is stored on the Stella Relay
  - Data is never shared between instances
- **Significant Labour Savings**
  - 98% reduction in labour
  - Full network health check with 100% accuracy every day !

## Stella Requirements

### Requirements to run Discovery/Compliance/ Configuration\* and Monitoring modules and leverage Stella Central

- Stella Instance with an enterprise licence
- Provision target networks
- \*Order Stella Relay per target network
- \*Install Stella Relay on the target network

\* not required for Configuration

### Technical information to provision a Network for Stella Relay deployment

- Open outbound internet access on dedicated untagged VLAN (recommend VLAN 120)
  - TCP/443 to Stella VPN
- Unrestricted Layer 2 access and details of target VLANs, including
  - VLAN tag
  - Static IP address and subnet mask
- Active device credentials - SSH or API access to
  - Firewalls
  - Switches
  - Wireless controller

## Stella credentials

- SOC II
- CyberCX
  - 6 monthly attestation for Stella Relay and Portal
- SNMP v3 encryption activated for ServiceNow

### Patents:

- U.S. Patent Application No. 18/134,877
- Australian Provisional Patent Application No. 2022901013
- European Patent Application No. 23168068.

To find out more, email us at [info@stella.net.au](mailto:info@stella.net.au) or got to [www.stellanetworks.io](http://www.stellanetworks.io)

